



Dry Vacuum Pumps LEYVAC

Jump ahead to
high performance



The LEYVAC series

Excellent performance

LEYVAC dry vacuum pumps provide the performance you need!

This product range for the 300 m³/h market has been designed to meet the special needs of industrial processes and coating applications.

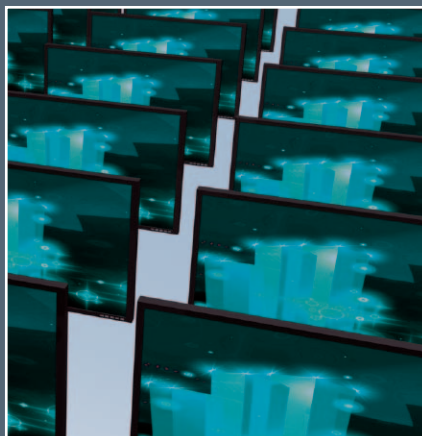
LEYVAC pumps and system combinations are rugged, reliable and durable, ready to cope with harsh process requirements.

The LEYVAC product line comprises the models LEYVAC LV 80, LV 140, LV 250 and their C or CC versions.

The new LEYVAC LV 250 significantly expands the performance spectrum of this product range with excellent energy efficiency characteristics.

Your first choice in dry pump technology

+ Reliability



+ High performance



System solution with roots pump RUVAC WH 700

Benefits to the customer

■ Dry pump technology

- No oil contact to process gases
- Only occasional gear oil change

■ High pumping speed

for air and H₂ already at high pressures

■ Hermetically tight

- No shaft seals to ambient
- No oil leakage
- Safe pumping of toxic gases

■ High reliability

- Long service intervals of up to 5 years
- High uptime with limited maintenance
- Robust and durable design

■ One motor solution

Multi-voltage, dual frequency motor operable at 200V - 460V and 50/60Hz

■ Easy and modular

Direct coupling of roots booster pumps without frames for models WH 700 and WA(U)/WS(U) 251-1001 provides enhanced pumping performance

Application examples

■ Process industry

- Industrial furnaces
- Degassing
- Charging
- Casting
- Drying processes in general
- Freeze drying
- Packaging

■ Coating

- PVD/CVD coating
- Wear resistant coatings
- Optical coating
- Web coating

■ Solar

- CVD/PECVD
- Crystal pulling and casting

■ Support functions

- Regeneration of cryo pumps
- Backing pumps for Turbomolecular pumps

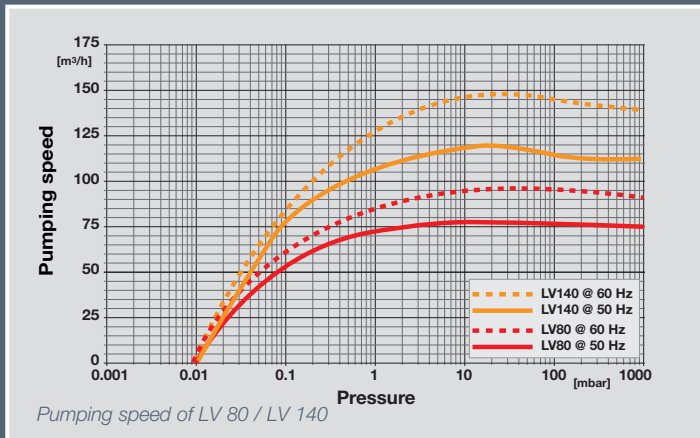


A jump ahead

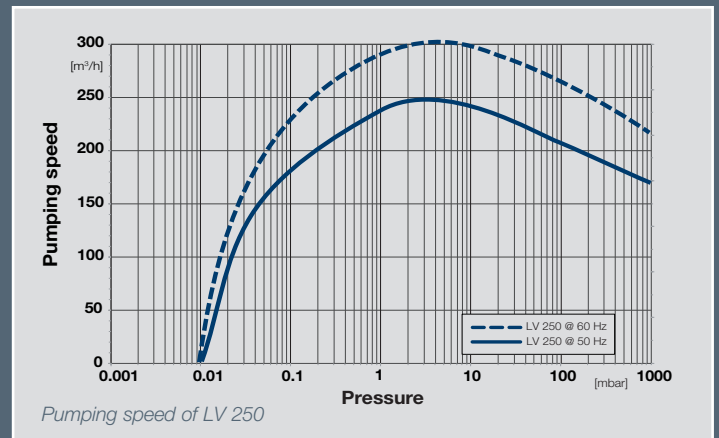
Maximum productivity and low cost of ownership

when your process requires ...

+ Fast pump down



+ Best energy efficiency



Features at a glance

LEYVAC dry vacuum pumps provide **optimized**

■ System uptime

- Robust design based on the proven RUVAC and DRYVAC technology
- Most effective cooling system
- Thermal switch protection
- Tolerant to pressure shocks
- Long intervals for bearing exchange

■ Process safety

- Designed for harsh applications

■ Excellent performance data



- High pumping speed
- from atmosphere to process pressure
- for light gases

■ Low noise and low heat emission

■ Price-to-performance ratio

- Low investment costs
- Small, price optimized pumping systems

Technical Data

LEYVAC LV product range								
LEYVAC models: C versions with housing, CC versions include temperature monitoring								
Technical data		LV 80	LV 140	LV 250	LV 80 C / CC	LV 140 C / CC	LV 250 C / CC	
Nominal pumping speed without gas ballast at 50/60 Hz	m ³ /h	80 / 96	125 / 145	250 / 300	80 / 96	125 / 145	250 / 300	
Ultimate pressure with seal and rotor purge	mbar	1 x 10 ⁻²	1 x 10 ⁻²	1 x 10 ⁻²	1 x 10 ⁻²	1 x 10 ⁻²	1 x 10 ⁻²	
Power consumption at ultimate pressure at 50/60 Hz	kW	2.9 / 3.2	3.9 / 4.3	4.2 / 4.7	2.9 / 3.2	3.9 / 4.3	4.2 / 4.7	
Weight, approx.	kg	280	300	330	300	320	350	
Noise level *	dB(A)	< 65	< 65	< 72	< 65	< 65	< 72	
Intake connection	DN	63 ISO-K	63 ISO-K	63 ISO-K	63 ISO-K	63 ISO-K	63 ISO-K	
Exhaust side connection	DN	40 ISO-KF	40 ISO-KF	40 ISO-KF	40 ISO-KF	40 ISO-KF	40 ISO-KF	
Mains voltage (+/- 10%)	V	200 - 460	200 - 460	200 - 460	200 - 460 380 - 460 (CC)	200 - 460 380 - 460 (CC)	200 - 460 380 - 460 (CC)	
Nominal power at 50/60 Hz	kW	4.1	5.5	8	4.1	5.5	8	
Nominal current at 50/60 Hz	A	6	8	16	6	8	16	
Cooling		water/glycol	water/glycol	water/glycol	water/glycol	water/glycol	water/glycol	
Cooling water temperature	°C	5 - 35	5 - 35	5 - 35	5 - 35	5 - 35	5 - 35	
Cooling water throughput	l/min	3	3	3	3	3	3	
Water vapor tolerance with gas ballast 50/60 Hz	mbar	20/30	125/160	30/37	20/30	125/160	30/37	
Water vapor capacity with gas ballast 50/60 Hz	kg/h	1.24/2.3	11.5/18.0	6.3/6.5	1.24/2.3	11.5/18.0	6.3/6.5	
Permissible ambient temperature	°C	5 - 45	5 - 45	5 - 45	5 - 45	5 - 45	5 - 45	
Protection class EN 60529	IP	54	54	54	54	54	54	
Dimensions (W x H x D)	mm mm	814 x 375 x 550	895 x 400 x 567	1051 x 425 x 537	814 x 375 x 550 984 x 375 x 550	895 x 400 x 567 1065 x 400 x 567	1051 x 425 x 537 1224 x 425 x 537	

* at ultimate pressure and with rigid exhaust line DIN EN ISO 2151

Ordering information **	LV 80	LV 140	LV 250	LV 80 C / CC	LV 140 C / CC	LV 250 C / CC
LEYVAC dry vacuum pump, with lubricant LEYBONOL LVO 410, complete with base plate, castors, temperature switch, purge system, rotor purge	115080V15	115140V15	115250V15	-	-	-
with housing	-	-	-	115080V30	115140V30	115250V30
with housing and temperature controller box (CC)	-	-	-	115080V35	115140V35	115250V35
with LEYBONOL LVO 210 and housing	-	-	-	115080V40	115140V40	115250V40
Accessories						
Check valve ball type			115005A01			
Check valve spring loaded			115005A02			
Roots pump adapter for RUVAC WS(U) 251/501, WH 700	115005A03	115005A03	115005A05	115005A03	115005A03	115005A05
Roots pump adapter for RUVAC WA(U)/WS(U)1001	-	115005A04 + 115005A03	115005A06 + 115005A05	-	115005A04 + 115005A03	115005A06 + 115005A05
Exhaust pressure sensor	115005A10	115005A11	115005A09	115005A10	115005A11	115005A09
Gas ballast kit for ambient air., 24 V						115005A13
Standard silencer						115005A20
Drainable elbow for silencer						115005A26

** For detailed information on our full scope of LEYVAC pumps, please refer to our general catalog. Frequency converters are available for the complete LEYVAC range (200 V/380-460 V).

Visit our webshop www.leyboldproducts.com.

Please contact us for more technical details on the entire LEYVAC series.

Leybold

Leybold GmbH
Bonner Str. 498 · D-50968 Köln

T +49 (0) 221-347-0
F +49 (0) 221-347-1250
info@leybold.com

www.leybold.com

